

Relationship between the LSCB & the Children's Trust Board

Every Child Matters In Lincolnshire



1.0 Introduction

1.1 This protocol sets out the relationship between the Children Trust Board (CTB) and Lincolnshire Safeguarding Children Board (LSCB).

1.2 Safeguarding children and young people can only be effective if it is undertaken within the general context of promoting the wellbeing of children and young people, and equally the CTB arrangements must take account of the work of the LSCB to safeguard children and young people.

2.0 Legislative Background

2.1 Section 10 of the Children Act (2004) requires local authorities and 'relevant partners' to co-operate to improve the wellbeing of children and young people. The local authority must take the lead in making arrangements to promote co-operation between local agencies in this regard.

2.2 *Statutory Guidance on co-operation arrangements including the Children's Trust Board and the Children and Young Peoples Plan (DCFS March 2010)* set out by promoting cooperation between partners how these arrangements will improve the lives of local children, young people and families across the five key outcomes. The outcomes are underpinned by the General Principles of the United Nations Convention on the Rights of the Child (UNCRC)

2.3 The Children Act 2004 (Sections 13,14,15 & 16) also required local authorities to establish and operate a Local Safeguarding Children Board as the statutory successor to the Area Child Protection Committee. The core objectives of the LSCB as set out in the Children Act 2004 are to co-ordinate what each person or agency represented on the LSCB does to safeguard and promote the welfare of children and young people, and to ensure the effectiveness of what is done for that purpose. The role and function of the LSCB are set out in *Working Together to Safeguard Children: a guide to interagency working to safeguard and promote the welfare of children (HM Government / DCSF March 2010)*

2.4 The work of LSCB fits within the wider context of the CTB, and whilst it contributes to the overall goal of improving the wellbeing (five outcomes) of all children and young people, it has particular focus on the 'Stay Safe' outcome.

3.0 Functions of the CTB

3.1 The CTB is the lead partnership board for children, young people and families in Lincolnshire, and operates within the context of the Local Area Agreement and Sustainable Community Strategy. The main function of the CTB is to promote and enable co-operation between agencies with a view to improving the well-being, (as defined by the five Every Child Matters outcomes) of children and young people in Lincolnshire.



3.2 The CTB will monitor the implementation of the Children and Young People's Plan which will set out what resources are required to achieve the priority outcomes and targets specified in the Sustainable Community Strategy to reduce inequality and to narrow the gaps in outcomes and experiences for families.

4.0 Functions of the LSCB

4.1 There are three main aims of the LSCB are to:

- improve the effectiveness of work to safeguard children and young people;
- promote the welfare of children and young people by co-ordinating the work of partner agencies and ensuring its effectiveness; and
- co-ordinate wider safeguarding activity in Lincolnshire.

4.2 Inevitably this work will operate within the context of the CTB arrangements, given the broad overarching remit of the CTB. In order to ensure that the safeguarding activity of the professional network is effective, the LSCB will monitor the quality of that activity through peer review, self evaluation, performance indicators and joint audit.

4.3 The LSCB will be able to challenge organisations as necessary and communicate with the CTB with an independent voice. The CTB governance arrangements recognise that the LSCB has a distinct identity.

5.0 Accountability of the LSCB

5.1 Whilst LSCB has a role in co-ordinating and ensuring the effectiveness of agencies' work to safeguard and promote the welfare of children and young people, it is not accountable for their operational work. Each CTB and LSCB partner retains its own existing lines of accountability. The LSCB does not have the power to direct other organisations.

5.2 The independent chair of the LSCB is accountable to the Director for Children Services for the effectiveness of the work of the LSCB.

5.3 The local authority will scrutinise the operation of the LSCB as part of its scrutiny arrangements and through regular reports to the CTB. The effectiveness of the work of the LSCB will form part of the judgement of the inspectorates through Ofsted, CAA/Total Place.

6.0 Scrutiny Function of the LSCB

6.1 Where there are issues around the performance of individual agencies with respect to safeguarding children and young people, the relevant LSCB member for that agency will take the lead in the resolution process. Where no resolution has been possible, the Independent Chair of the LSCB will write to the lead member or 'accountable' person for that agency, copying the letter to the Director of Children Services.

Relationship between the LSCB & the Children's Trust Board

Every Child Matters In Lincolnshire

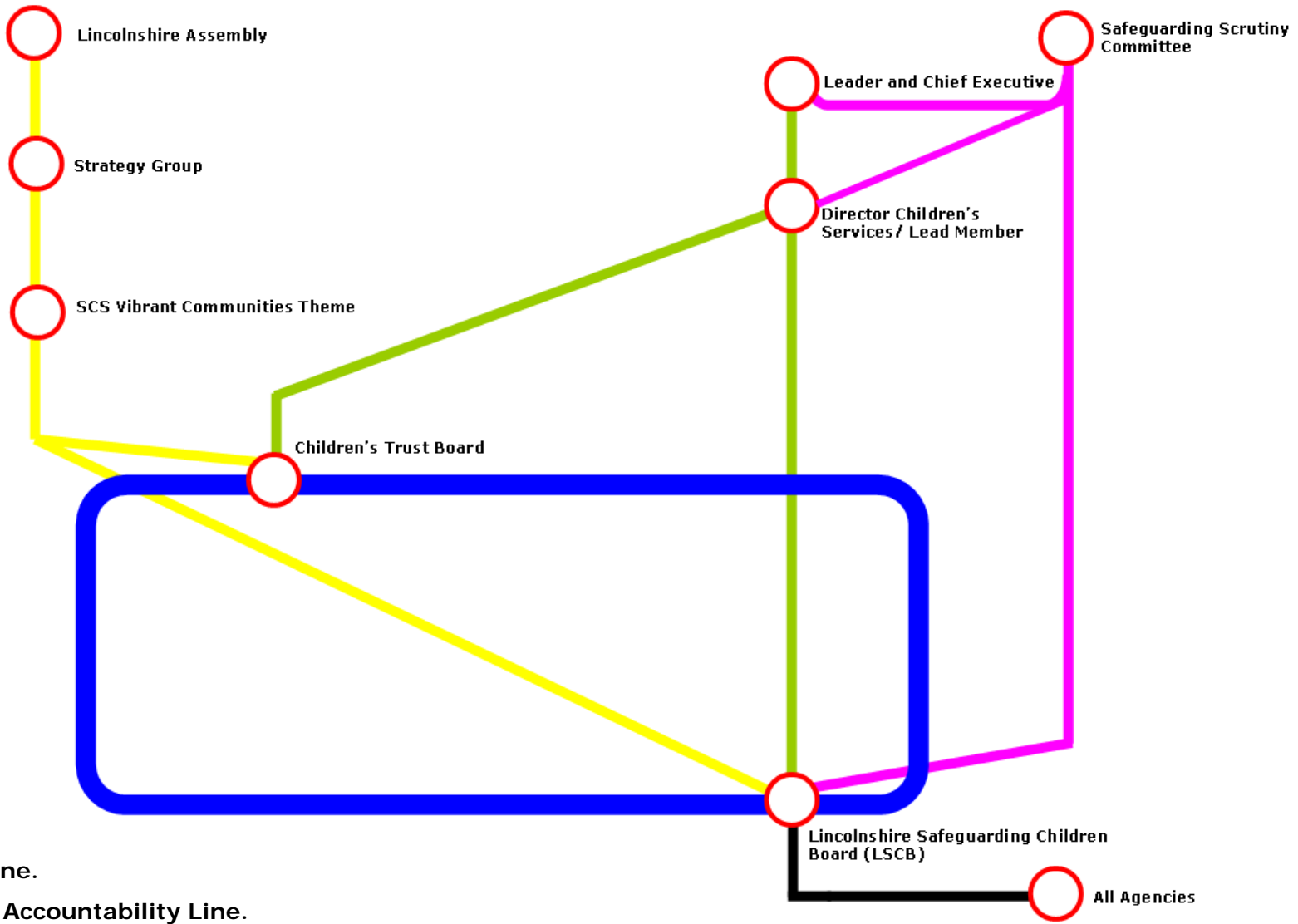


6.2 Where the LSCB is not convinced that any planned action to improve performance will be adequate, the Chair of the LSCB (or designated person) will explain the concerns to senior individuals in the partner organisation, or the relevant inspectorate, which may advise further steps to be taken if necessary.

7.0 Illustration of relationship between LSCB and CTB

7.1 The schematic diagrams over the next pages provide an illustration of the Key Functions and how both LSCB and CTB work together: -

Relationship between the LSCB & the Children's Trust Board



- Key:**
- Scrutiny Line.
 - Individual Accountability Line.
 - Relationship CTB & LSCB Line. (Drives, delivers holds to account)
 - Overarching accountability Line.
 - Delivery Line.

Relationship between the LSCB & the Children's Trust Board



Lincolnshire Assembly

The Lincolnshire Assembly is the overarching strategic body which seeks to speak with one voice for Lincolnshire. It is the body through which the sustainable Community Strategy has been endorsed. The principle action plan to deliver this strategy is the Local Area Agreement.

Strategy Group

The Strategy Board receive performance reports for each of the six themes within the community strategy. These reports include all NIs reported to the spatial level required by the NI definition, 'Big Ideas' and the LAA priority areas relevant to each theme.

SCS Vibrant Communities Theme The outcome of this theme is that 'People get on well and respect each other'. The SCS contribute to this outcome, playing a major role in the Lincolnshire Cohesion Partnership. Working to make sure that they understand, recognise, plan for and deliver services for all diverse groups of people and individuals and understand the impact that has for them. The group validates their progress through the Equality Standard for Local Government. Promoting social cohesion is a priority in the Local Area Agreement.

Children's Trust Board

This is the statutory body which provides interagency governance of the co-operation arrangements as a whole (through the CYPP process). The CTB have a clear and separate identity within the wider co-operation arrangements.

Lincolnshire Safeguarding Children's Board

The LSCB ensures the effectiveness of the arrangements made by individual agencies and the wider partnership to safeguard and promote the welfare of children

Safeguarding Scrutiny Committee

Scrutinise the effectiveness of the Safeguarding Children Board's arrangements for ensuring agencies work together to protect children from maltreatment and prevent impairment of children's health or development.

Chief Executive

The Council's Chief Executive together with the Council Leader: takes responsibility for, and supports the Lead Member (LM) and Director of Children's Services (DCS) in, ensuring that Children's Trust and safeguarding arrangements are robust and are integrated into the overall strategic planning.

Council Leader

The leader chairs meetings of the council's Cabinet, and leads on policy development, implementation, and communication with central government. The leader agrees the council's Forward Plan which sets out when decisions are to be made by the Cabinet. The Leader will

Relationship between the LSCB & the Children's Trust Board



require the Lead Member to report on any key risks and action plans that they have identified. Leaders should expect the Lead Member to provide a sufficient detailed explanation of pressures, risks and risk mitigation plans to reassure them that a comprehensive performance framework is exercised by the Lead Member.

Director of Children's Services

The Director of Children's Services (DCS) should contribute to planning the provision of the full range of services and promote the interests of children, young people and families across the range of LCC services. The DCS will ensure that all council services take account of the needs of children and young people and understand how these services contribute to improving outcomes and narrowing gaps for children from disadvantaged backgrounds and those who have special educational needs and/or disabilities.

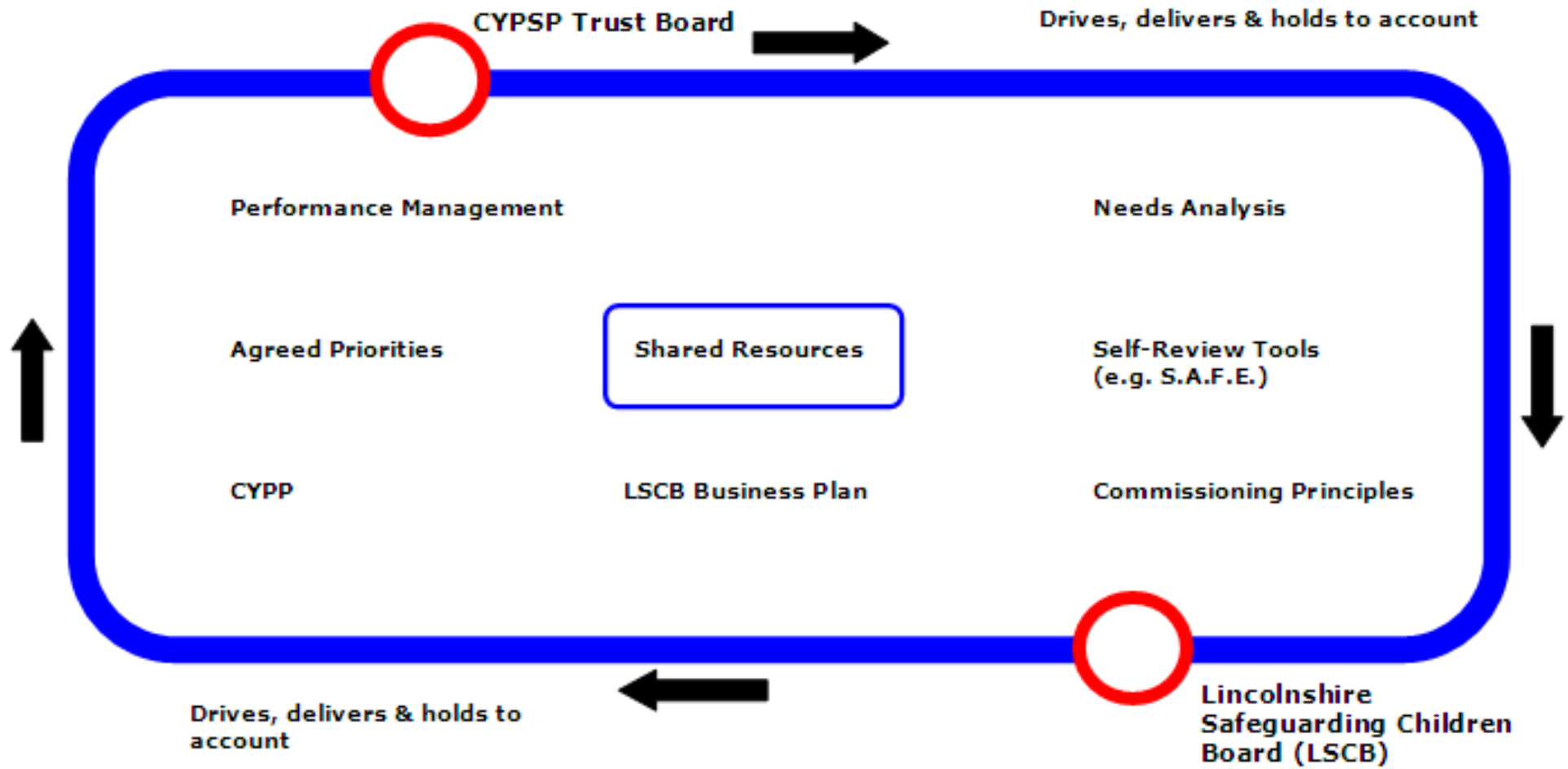
Lead Member

The Lead Member (LM) has a strategic role and will take decisions in respect of local authority children's services. The LM will exercise these functions within the local framework of accountabilities, and will be held to account in doing so through the local authority Overview and Scrutiny Committee. The committee can require the LM to attend or provide information on matters relating to children and young people in Lincolnshire covering the full range of services for children, not just those commissioned or provided by LCC. This provides the means of ensuring strong local accountability for the delivery of children's services.

All Agencies

The performance of individual agencies with respect to safeguarding children and young people, lies the relevant LSCB member for that agency.

Relationship between the LSCB & the Children's Trust Board





How we Secure Accountability for Safeguarding

